

2 3 NOV 2015

Mr Steve Atkinson
Chief Executive
Hinckley & Bosworth Borough Council
Hinckley Hub
Rugby Road
Hinckley LE10 0FR

17th November 2015

Dear Mr Atkinson

ELECTORAL REVIEW OF LEICESTERSHIRE: DRAFT RECOMMENDATIONS

The Local Government Boundary Commission for England has published draft recommendations on the future electoral arrangements for Leicestershire County Council. Today is the start of an 8 week public consultation on the Commission's draft recommendations on new electoral division boundaries across Leicestershire. The consultation closes on 11th January 2016.

View the draft recommendations

You can view the Commission's draft recommendations at <https://consultation.lgbce.org.uk/node/5186> where you can find interactive maps, a report and guidance on how to have your say. The Commission has not finalised its conclusions and now invites representations on the draft recommendations.

Enclosed with this letter is a summary outlining the Commission's draft recommendations and a copy of the letter to the Chief Executive of Leicestershire County Council. An interactive map of the Commission's recommendations for Leicestershire County Council, electorate figures and guidance on how to propose new electoral divisions are available on the consultation area at: <https://consultation.lgbce.org.uk/node/5186> Further information about the review and the Commission's work is also published on our website at: <http://www.lgbce.org.uk/current-reviews/east-midlands/leicestershire/leicestershire-county-council>.

Have your say

We encourage everyone who has a view on the draft recommendations to contact us whether you support them or whether you wish to propose alternative arrangements.

Before finalising the recommendations, the Commission will consider every representation received during consultation whether it is submitted by an individual, a local group or an organisation. We will weigh each submission against the criteria the Commission must follow when drawing up electoral arrangements:

- To deliver electoral equality where each county councillor represents roughly the same number of electors as others across the county.
- That the pattern of divisions should, as far as possible, reflect the interests and identities of local communities.
- That the electoral arrangements should provide for effective and convenient local government.

It is important that you take account of the criteria if you are suggesting an alternative pattern of electoral divisions. You can find additional guidance and information about previous electoral reviews on our website to help you or your organisation make a submission.

Get in touch

The Commission welcomes comments on the recommendations report by 11th January 2016. Representations should be made:

- Through our interactive consultation portal where you can explore the maps of the recommendations, draw your own boundaries and supply comments at: <https://consultation.lgbce.org.uk/node/5186>
- By email to: reviews@lgbce.org.uk.
- Or in writing to:

Review Officer (Leicestershire)
Local Government Boundary Commission for England
14th Floor
Millbank Tower
Millbank
London
SW1P 4QP

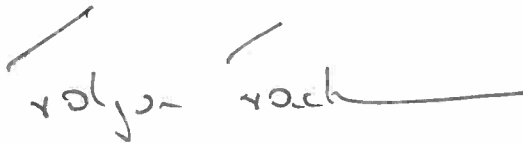
The Commission aims to publish every response it receives during phases of consultation. If you do not want all or any part of your response or name to be made public, you must state this clearly in the response. Any such request should explain why confidentiality is necessary. All responses may be subject to publication or disclosure as required by law (in particular under the Freedom of Information Act 2000).

The
Local Government
Boundary Commission
for England

This is the last opportunity to influence the Commission's recommendations before they are finalised. We therefore encourage local people to get in touch with us and have their say.

If you have any queries, please do not hesitate to contact me.

Yours sincerely

A handwritten signature in black ink, appearing to read 'Jolyon Jackson', with a long horizontal line extending to the right.

Jolyon Jackson CBE
Chief Executive
reviews@lgbce.org.uk
0330 500 1525

Helping you to have your say:

We are now consulting local people on a new pattern of electoral divisions for Leicestershire. The Commission has an open mind about its final recommendations and will consider every piece of evidence we receive from local groups and people. Every representation will be considered, regardless of whom it is from or whether it relates to the whole county or just a part of it.

If you agree with our recommendations, please let us know. If you don't think our recommendations are right for Leicestershire, we want to hear alternative proposals for a different pattern of divisions.

The Commission aims to propose a pattern of electoral divisions for Leicestershire which delivers:

- **Electoral equality:** each councillor represents a similar number of voters.
- **Community identity:** reflects the identity and interests of local communities.
- **Effective and convenient local government:** helping your council discharge its responsibilities effectively.

A good pattern of divisions should:

- Provide good electoral equality, with each councillor representing, as closely as possible, the same number of voters.
- Reflect community interests and identities and include evidence of community links.
- Be based on strong, easily identifiable boundaries.
- Help the council deliver effective and convenient local government.

Electoral equality:

- Does your proposal mean that councillors would represent roughly the same number of voters as elsewhere in the council area?

Community identity:

- **Transport links:** are there good links across your proposed division? Is there any form of public transport?
- **Community groups:** is there a parish council, residents association or another group that represents the area?
- **Facilities:** does your pattern of divisions reflect where local people go for shops, medical services, leisure facilities etc?
- **Interests:** what issues bind the community together or separate it from other parts of your area?
- **Identifiable boundaries:** are there natural or constructed features which make strong boundaries for your proposals?

Effective local government:

- Are any of the proposed divisions too large or small to be represented effectively?
- Are the proposed names of the electoral divisions appropriate?

Useful tips:

- Our website has a special consultation area where you can explore the maps and draw your own proposed boundaries. You can find it at www.consultation.igbce.org.uk.
- We publish all submissions we receive on our website so you can follow what other people and organisations have told us. Go to: www.igbce.org.uk

Have your say by writing to:

Review Officer (Leicestershire)
LGBCE
14th floor, Millbank Tower
London
SW1P 4QP

Through our consultation area:

www.consultation.igbce.org.uk
or by email to: reviews@igbce.org.uk

The full report and interactive maps are available to view at www.igbce.org.uk

Follow us on Twitter: [@LGBCE](https://twitter.com/LGBCE)

The
Local Government
Boundary Commission
for England

November 2015

Draft recommendations on the new electoral arrangements for Leicestershire County Council

Summary report

Read the full report, view detailed maps and have your say at: www.consultation.igbce.org.uk
Find out more at: www.igbce.org.uk
Follow us on Twitter at: [@LGBCE](https://twitter.com/LGBCE)

Who we are

The Local Government Boundary Commission for England is an independent body set up by Parliament. We are not part of government or any political party. We are accountable to Parliament through a committee of MPs chaired by the Speaker of the House of Commons.

Our main role is to carry out electoral reviews of local authorities throughout England.

Electoral review

An electoral review examines and proposes new electoral arrangements for a local authority. A local authority's electoral arrangements are:

- The total number of councillors representing the council's voters ('council size').
- The names, number and boundaries of wards or electoral divisions.
- The number of councillors representing each ward or division.

Why Leicestershire?

We are conducting an electoral review of Leicestershire County Council to deliver improved levels of electoral equality for local voters.

Leicestershire currently has high levels of electoral inequality where some county councillors represent many more - or many fewer - voters than others. This means that the value of your vote - in county council elections - varies depending on where you live in Leicestershire.

Our proposals

Leicestershire County Council currently has 55 councillors. We propose that the council should continue to have 55 councillors in future. The Commission believes that a council size of 55 will ensure the authority can discharge its roles and responsibilities effectively and provides for a division pattern that meets our statutory criteria.

Electoral arrangements

Our draft recommendations propose that Leicestershire's 55 councillors should represent 51 single-member divisions and two two-member divisions across the county.

You have until 11 January 2016 to have your say on the recommendations

Stage of review	Description
12 May 2015 - 20 Jul 2015	Public consultation on new division boundaries
17 Nov 2015 - 11 Jan 2016	Public consultation on draft recommendations for new electoral arrangements
5 April 2016	Publication of final recommendations by the Commission
May 2017	Subject to parliamentary approval - implementation of new arrangements at county elections

Overview of draft recommendations for Leicestershire County Council

- Single-Member Divisions
- Two-Member Divisions

Summary of our recommendations
 Before drawing up the draft recommendations the Commission carried out a public consultation inviting proposals for a new pattern of divisions for 55 county councillors.

We have considered all of the submissions we received during that phase of consultation.

Our draft recommendations propose that Leicestershire's 55 county councillors should represent 51 single-member divisions and two two-member divisions across the county.

The Commission believes the draft recommendations meet its obligations – which are set in law to:

- Deliver electoral equality for voters.
- Reflect local community interests and identities.
- Promote effective and convenient local government.

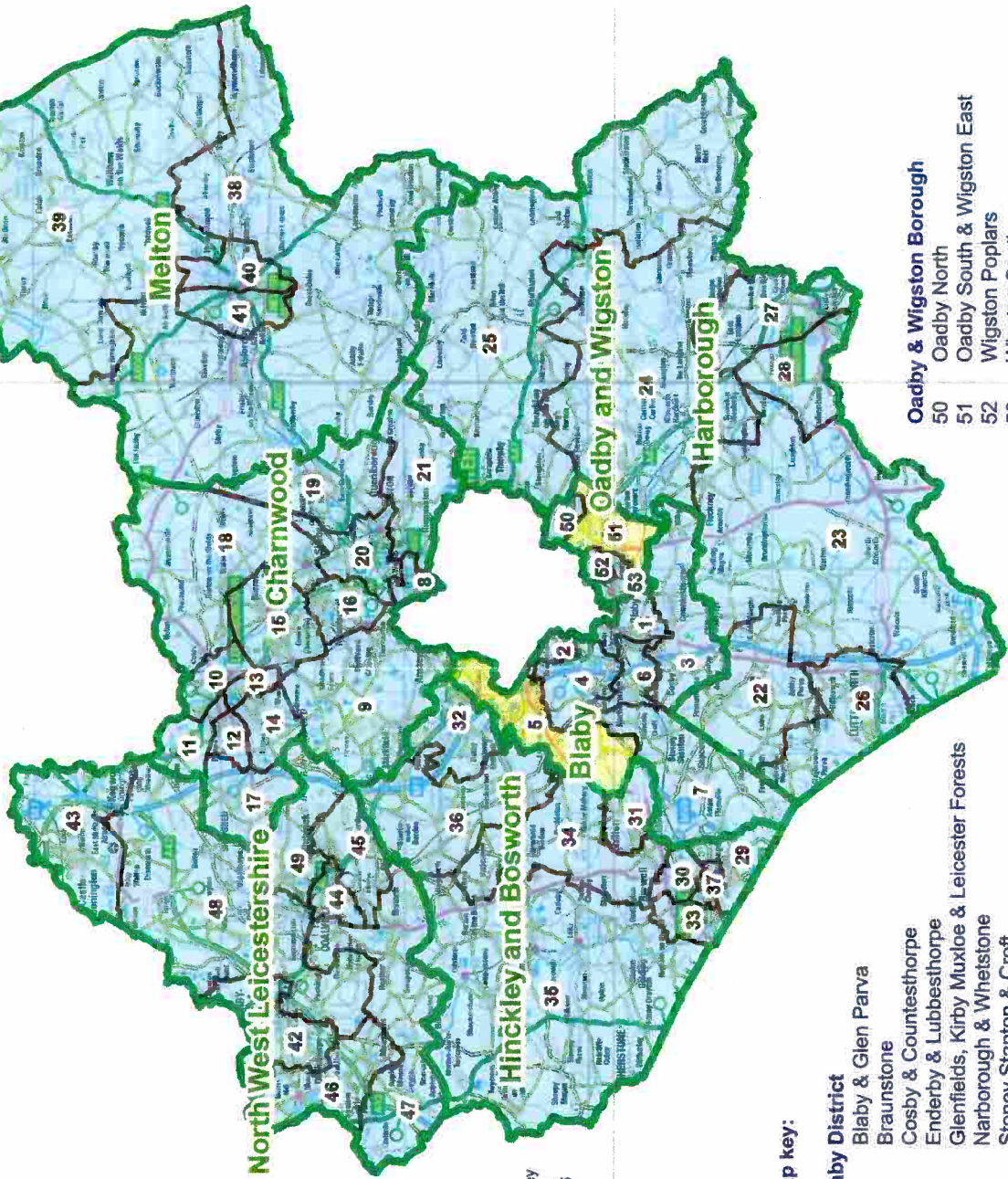
You can read the full report on our website at www.lgbce.org.uk.

View this map online and draw your own boundaries: www.consultation.lgbce.org.uk

Follow the review on Twitter: @LGBCE

If you are viewing this page online, click on the map to go straight to our interactive consultation area

contains Ordnance Survey data (c) Crown copyright and database rights 2015



- Charnwood Borough**
- 8 Birstall
 - 9 Bradgate
 - 10 Loughborough East
 - 11 Loughborough North
 - 12 Loughborough North West
 - 13 Loughborough South
 - 14 Loughborough South West
 - 15 Quorn & Barrow
 - 16 Rothley & Mountsorrel
 - 17 Shepshed
 - 18 Sileby & The Wolds
 - 19 Syston Fosse
 - 20 Syston Ridgeway
 - 21 Thurmaston Ridgemere

- Harborough District**
- 22 Broughton Astley
 - 23 Bruntingthorpe
 - 24 Gattree
 - 25 Launde
 - 26 Lutterworth
 - 27 Market Harborough East
 - 28 Market Harborough West & Foxton

- Hinckley & Bosworth Borough**
- 29 Burbage
 - 30 De Montfort
 - 31 Earl Shilton
 - 32 Groby & Ratby
 - 33 Hollycroft
 - 34 Malloway
 - 35 Market Bosworth
 - 36 Markfield, Desford & Thorntor
 - 37 St Marys

- Melton Borough**
- 38 Asfordby
 - 39 Belvoir
 - 40 Melton East
 - 41 Melton West

- North West Leicestershire District**
- 42 Ashby de la Zouch
 - 43 Castle Donington & Kegworth
 - 44 Coalville North
 - 45 Coalville South
 - 46 Forest & Measham
 - 47 Ibstock & Appleby
 - 48 Valley
 - 49 Whitwick

Map key:

- Blaby District**
- 1 Blaby & Glen Parva
 - 2 Braunstone
 - 3 Cosby & Countesthorpe
 - 4 Enderby & Lubbethorpe
 - 5 Glenfields, Kirby Muxloe & Leicester Forests
 - 6 Narborough & Whetstone
 - 7 Stoney Stanton & Croft

- Oadby & Wigston Borough**
- 50 Oadby North
 - 51 Oadby South & Wigston East
 - 52 Wigston Poplars
 - 53 Wigston South

Have your say at www.consultation.lgbce.org.uk

- view the map of our recommendations down to street level.
- draw your own boundaries online.
- zoom into the areas that interest you most.
- find more guidance on how to have your say.
- read the full report of our recommendations.
- send us your views directly.

Mr John Sinnott
Chief Executive
Leicestershire County Council
County Hall
Glenfield
Leicester
LE3 8RA

17th November 2015

Dear Mr Sinnott

ELECTORAL REVIEW OF LEICESTERSHIRE: DRAFT RECOMMENDATIONS

The Local Government Boundary Commission for England has opened a public consultation on its draft recommendations for new electoral arrangements for Leicestershire County Council.

The consultation opens today (17th November 2015) and closes on 11th January 2016.

The draft recommendations propose that 55 county councillors should be elected to Leicestershire County Council in future. The recommendations also propose new electoral divisions boundaries across the county.

Once the Commission has considered all the responses to the consultation, we aim to publish final recommendations in April 2016. We will then lay a draft order in both Houses of Parliament under the negative resolution procedure. Subject to parliamentary scrutiny, the new electoral arrangements are scheduled to come into effect at the local elections in 2017.

All information relating to the draft recommendations is available on our website. The Commission's report on its draft recommendations can also be found at: <http://www.lgbce.org.uk/current-reviews/east-midlands/leicestershire/leicestershire-county-council>. In addition, hard copies of the report and accompanying map will be dispatched to the Council shortly.

Interactive maps of the proposals are also posted on the Commission's consultation portal at: <https://consultation.lgbce.org.uk/node/5186>. The portal also allows visitors to submit comments and alternative proposals.

Publicising the consultation

The Commission will shortly dispatch hard copies of the recommendations to the council for distribution to local information points. In the meantime, I would be grateful if you could bring the consultation to the attention of elected members.

We have also provided information on the draft recommendations directly to district and parish councils and community organisations as well as notifying local press and media.

I would be grateful if you could also take steps to bring the consultation to the attention of the public and interested parties. In particular, please include details of the consultation:

- On your website;
- Promote the consultation through social media and;
- Use any other channels you would normally employ to engage residents in local consultations (newsletters, press releases, publications etc).

The Commission would be happy to provide information and/or copy to help you promote the consultation locally.

Draft recommendations

The Commission considered all the submissions it received in the previous stages of the review before drawing up the draft recommendations.

We have sought to balance the criteria we must follow when drawing up recommendations, namely:

- To deliver electoral equality where each county councillor represents roughly the same number of electors as others across the county.
- That the pattern of divisions should, as far as possible, reflect the interests and identities of local communities.
- That the electoral arrangements should provide for effective and convenient local government.

The Commission will consider all representations made on the draft recommendations and has an open mind about amending the scheme if an alternative pattern of divisions would better meet the statutory criteria above. It is also important for respondents to the consultation to indicate where and why they support the draft recommendations.

Further information on drawing up a pattern of electoral divisions and putting forward alternative proposals is available in our guidance document: *Electoral reviews: technical guidance* which can be found at:
www.lgbce.org.uk/data/assets/pdf_file/0006/10410/technical-guidance-2014.pdf.

Local Government Boundary Commission for England, 14th Floor, Millbank Tower, Millbank, London, SW1P 4QP

Tel: 0130 500 1525, Fax: 0330 500 1526; reviews@lgbce.org.uk, www.lgbce.org.uk

We also publish a practical guide for putting forward submissions called *How to propose a pattern of wards* which is available at:

http://www.lgbce.org.uk/data/assets/pdf_file/0008/25694/Proposing-new-wards-guidance-2015-08-04.pdf.

Our website includes information about previous electoral reviews of councils where you can see how the Commission came to its conclusions and how other counties, districts and parishes responded to consultations on draft recommendations.

As ever, please feel free to contact us if you have any questions about the consultation.

Correspondence and enquiries

Correspondence relating to the review – and consultation responses - should be addressed to:

Review Officer (Leicestershire)
Local Government Boundary Commission for England
14th Floor
Millbank Tower
Millbank
London
SW1P 4QP

Email: reviews@lgbce.org.uk

Responses to the consultation can also be made directly through our specialist consultation portal: <https://consultation.lgbce.org.uk/node/5186>
Further information on electoral reviews can also be found at our main website at www.lgbce.org.uk.

Your direct contacts for the review remain:

David Owen, Review Officer, with specific responsibility for the day-to-day running of the review: email: Reviews@lgbce.org.uk; tel: 0330 500 1277;

Alison Evison, Review Manager, leads the team dealing with this and other electoral reviews: email: Reviews@lgbce.org.uk; tel: 0330 500 1273

I am copying this letter to the organisations and individuals listed below.

Yours sincerely



Jolyon Jackson CBE
Chief Executive

reviews@lgbce.org.uk

0330 500 1525

- cc
- District Councils located in Leicestershire
 - MPs and MEP's with constituency interests in Leicestershire
 - Police and Crime Commissioner for Leicestershire
 - Clinical Commissioning Groups located in Leicestershire
 - Leicestershire Fire and Rescue Service
 - Local organisations in Leicestershire
 - Parish and Town Councils in Leicestershire