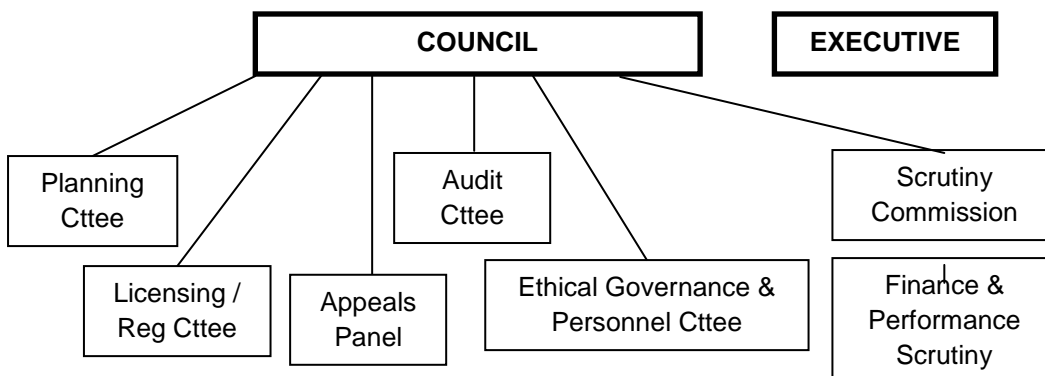


## Part 2 - Responsibility for functions

### a. Introduction

The Local Government Act 2000 and associated regulations requires that the majority of the authority's functions are carried out by its Executive. This part of the constitution sets out the responsibility of Council, committees and the Executive, and goes on to look out how decisions can be carried out by them, including by delegating to officers under the 'scheme of delegation'.

The diagram below shows the current decision making structure:



The terms of reference for Council, the Executive, committees, scrutiny bodies and working groups are included in this section of this constitution. The section following that contains the scheme of delegation to officers, which sets out which decisions can be taken by officers and how this will be exercised and recorded.